

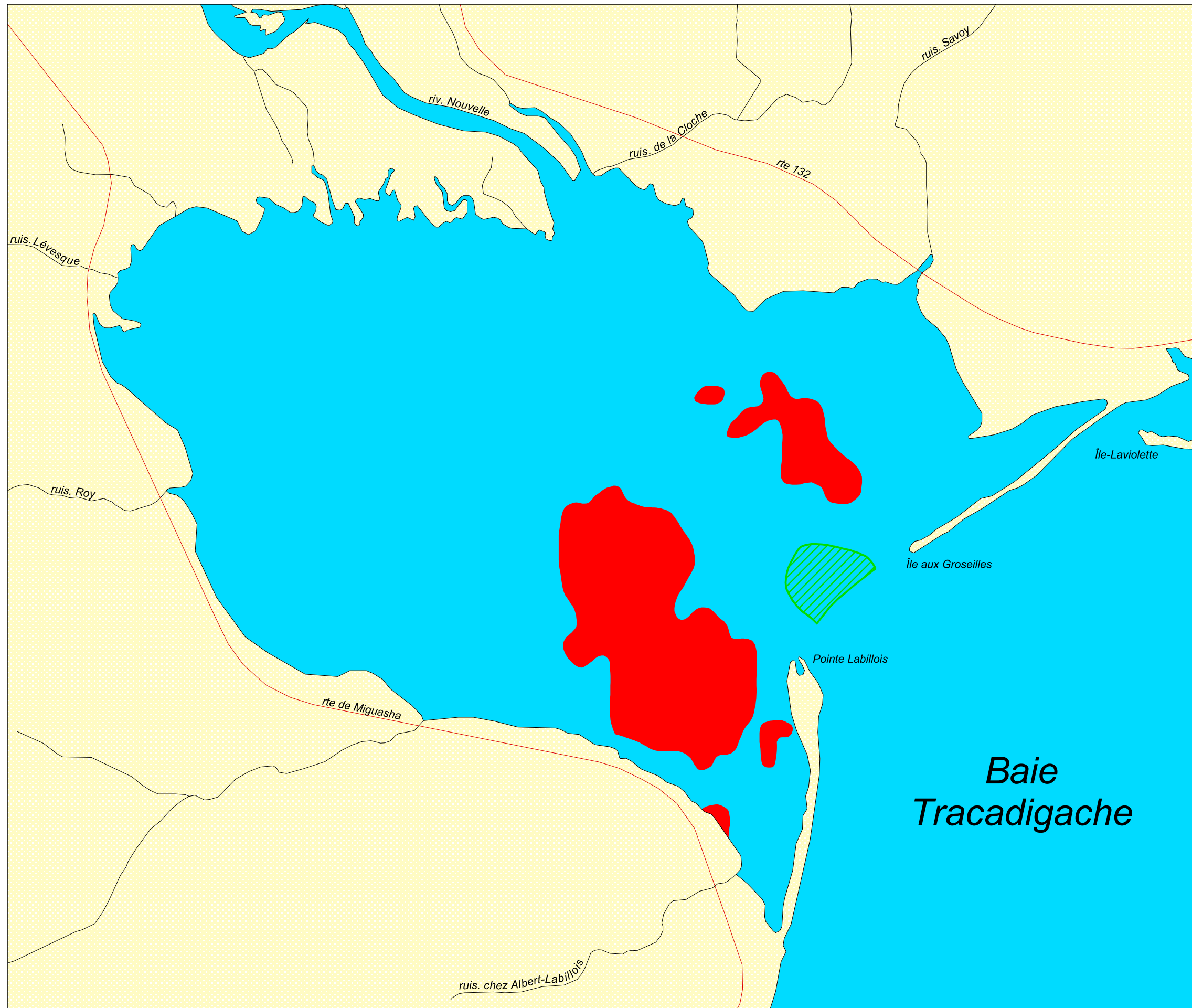


Barachois de Nouvelle

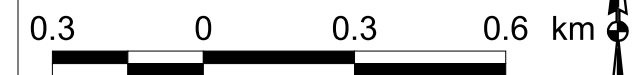
Bancs coquilliers

-  Mye commune
-  Moule bleue



CARTE 6A

1:15 000





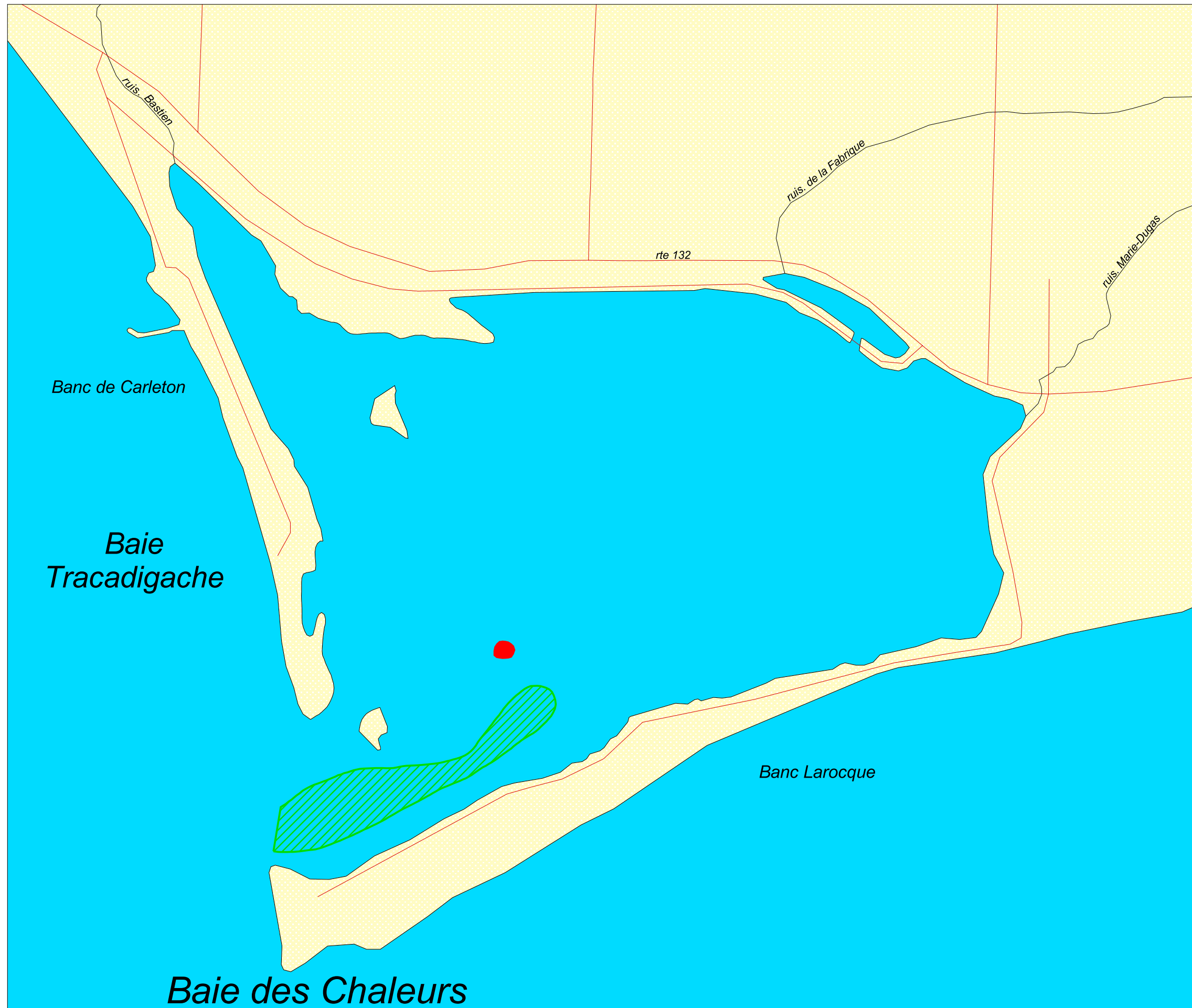
Projection UTM NAD83 Zone 19



Barchois de Carleton

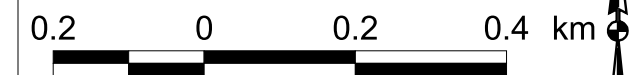
Bancs coquilliers

-  Mye commune
-  Moule bleue



CARTE 6B

1:10 000



Projection UTM NAD83 Zone 19

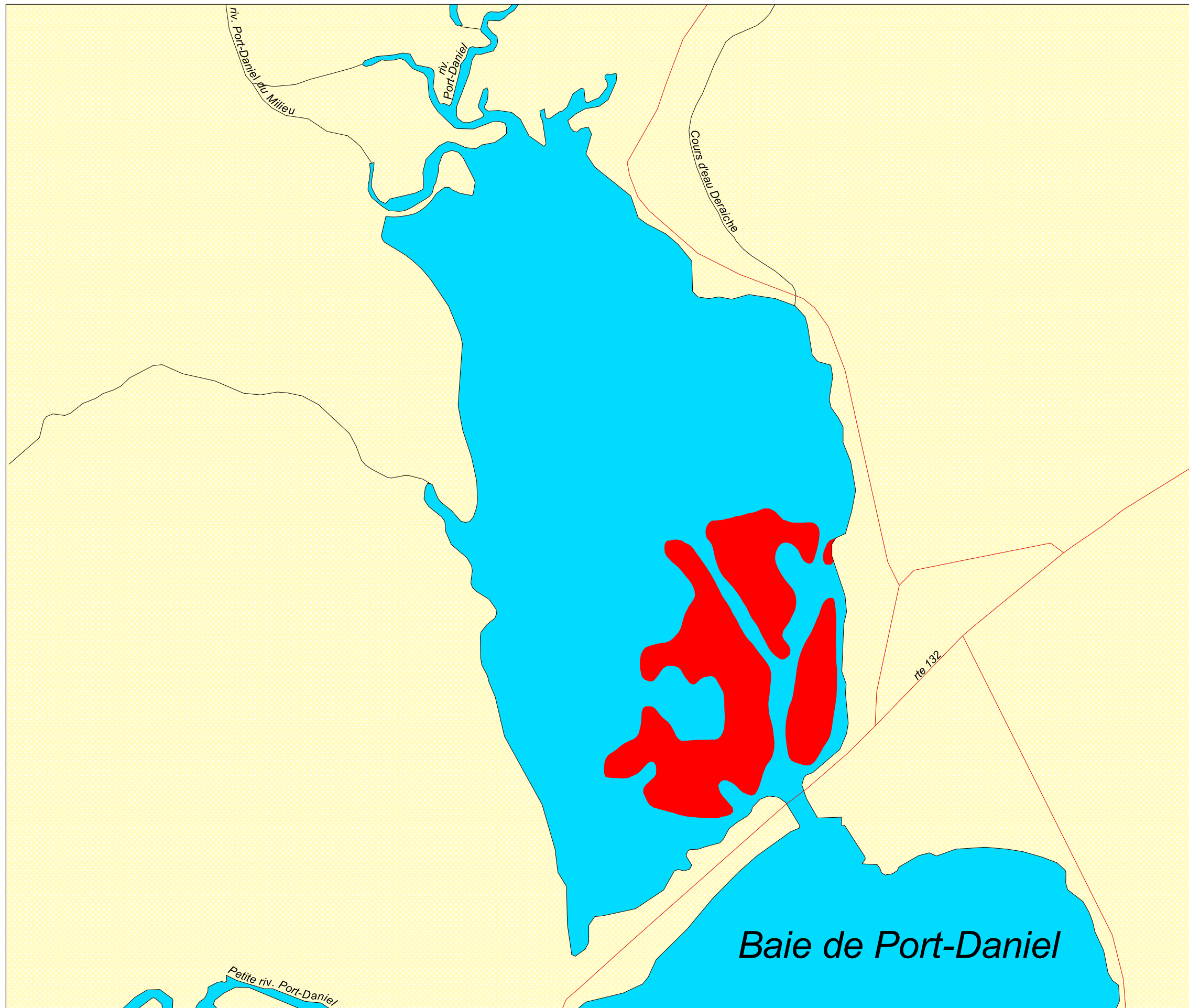


Barachois de Port-Daniel

Bancs coquilliers

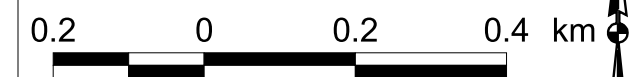


Mye commune



CARTE 6C

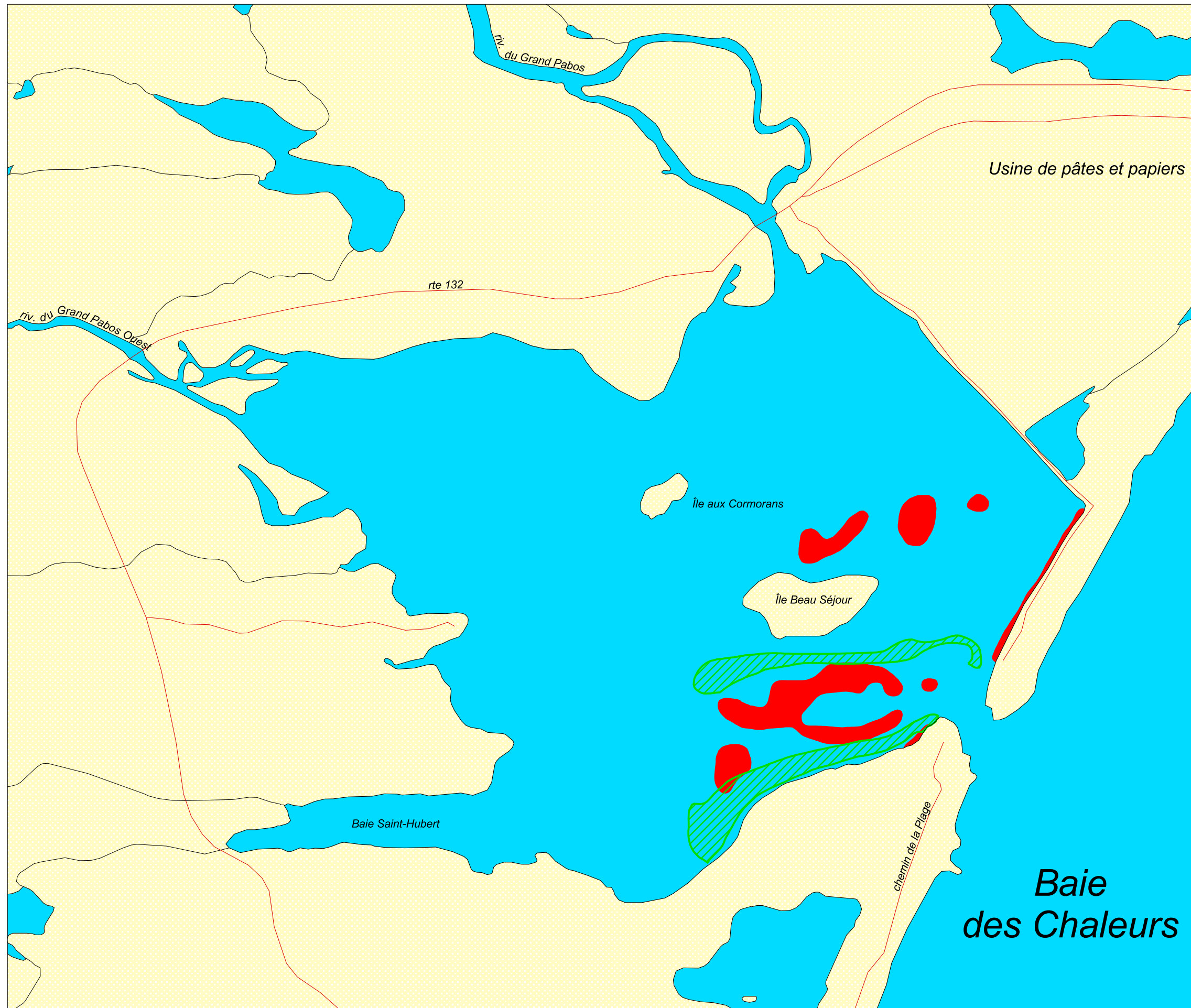
1:10 000





Projection UTM NAD83 Zone 20



Barachois de Chandler

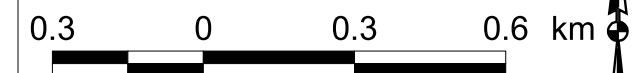


Bancs coquilliers

-  Mye commune
-  Moule bleue

CARTE 6D

1:15 000





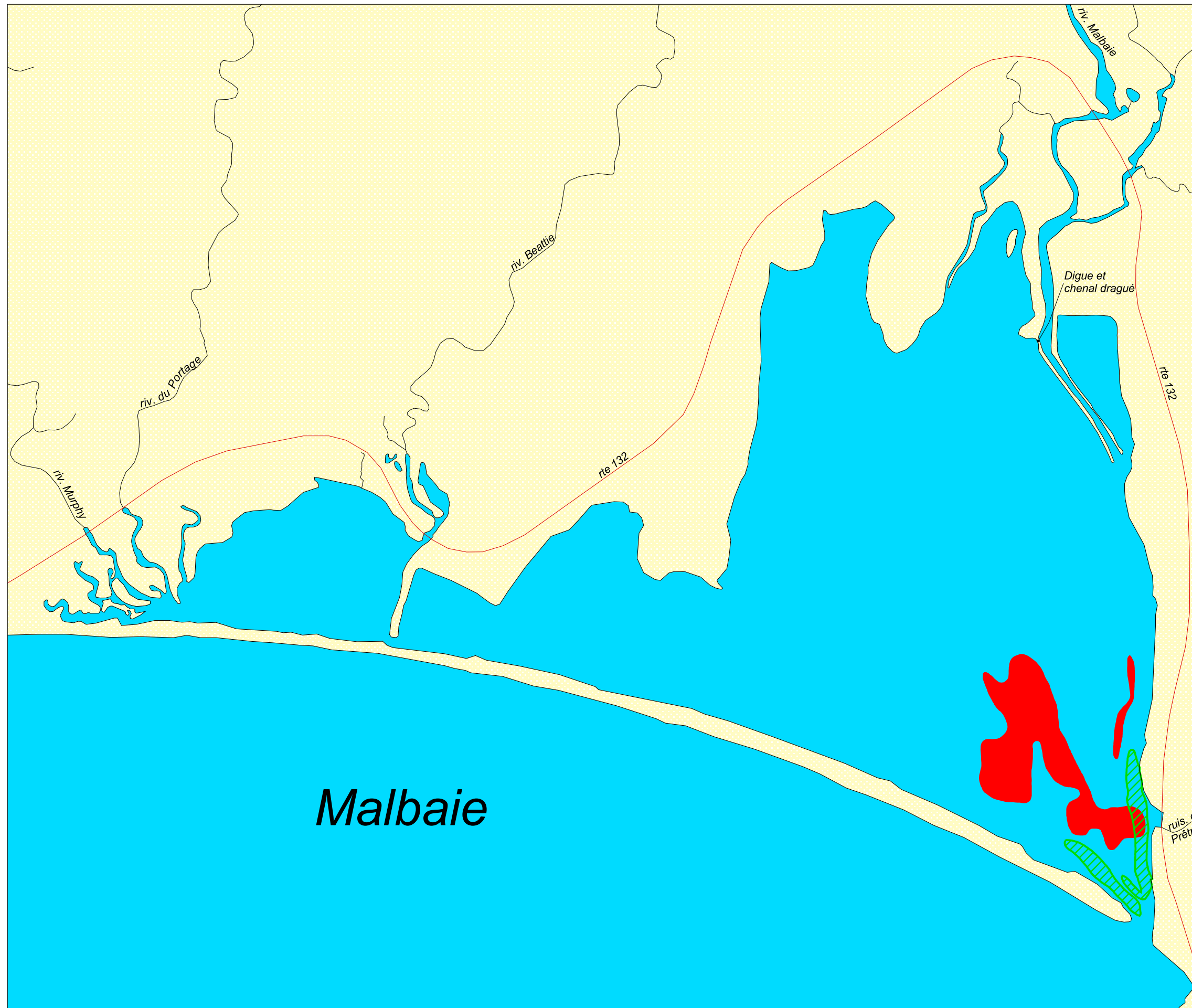
Projection UTM NAD83 Zone 20



Barchois de Malbaie

Bancs coquilliers

-  Mye commune
-  Moule bleue



CARTE 6E

1:20 000



0.4 0 0.4 0.8 km

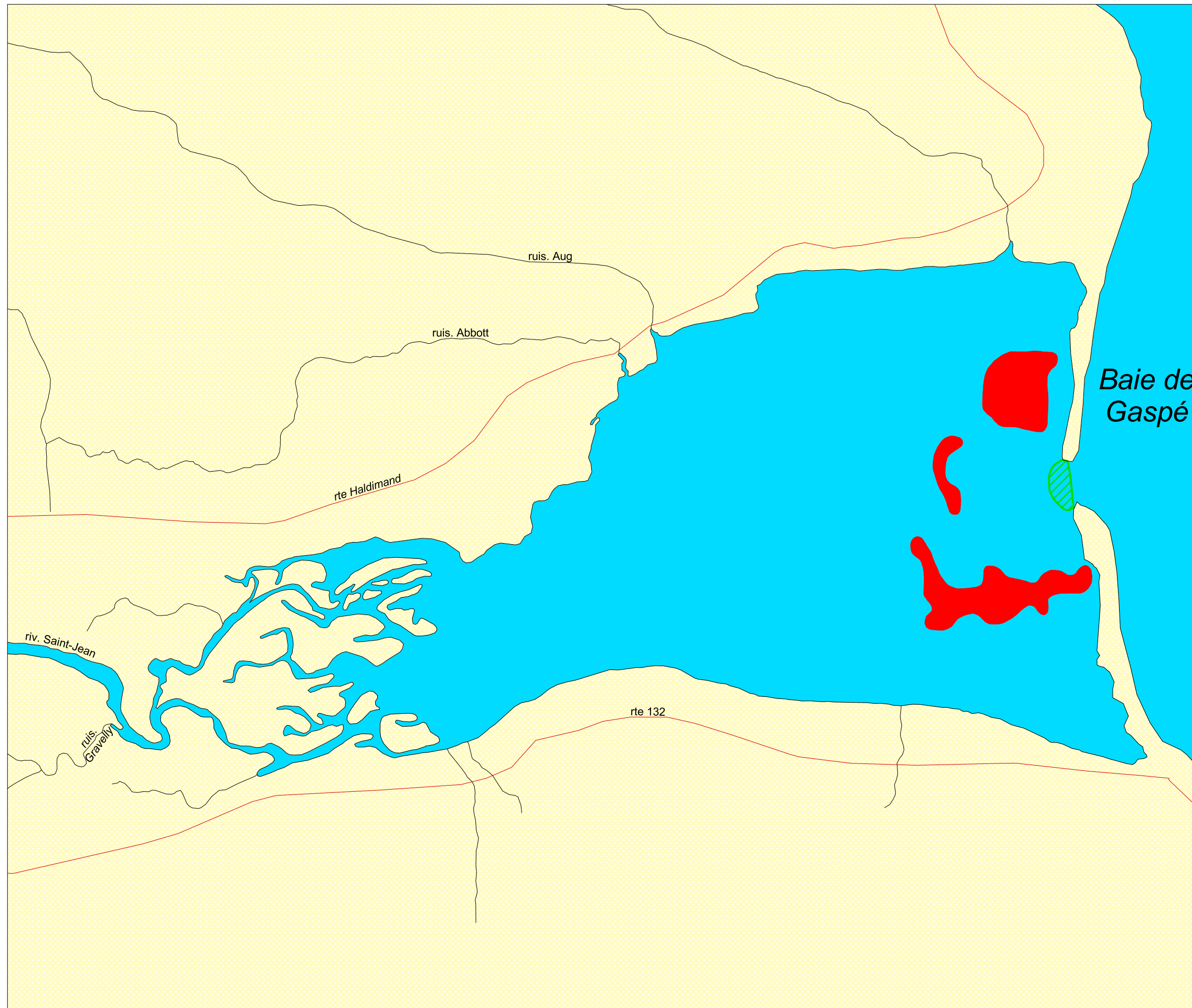


Projection UTM NAD83 Zone 20

Barachois de Douglastown

Bancs coquilliers

-  Mye commune
-  Moule bleue



CARTE 6F

1:20 000

0.4 0 0.4 0.8 km

Projection UTM NAD83 Zone 20